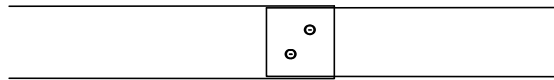
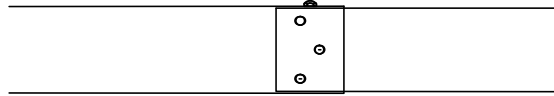


40.03 (M16x30 8.8)
2x40.30 (Flat Washer 18)

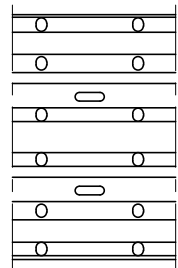


40.03 (M16x30 8.8)
2x40.30 (Flat Washer 18)

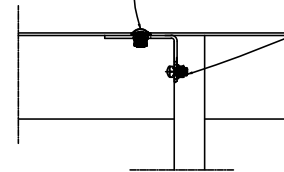


40.10 (M16x35 5.8)
40.30 Flat washer 18

40.10 (M16x35 5.8)
40.30 Flat washer 18

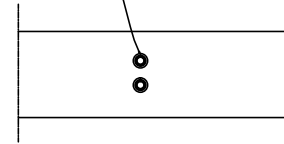


40.04 (M16x45 8.8)
40.30 (Flat Washer 18)
40.31 (Flat Washer 40x18x4)

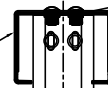


40.421 (M10x45 5.8)
2x 40.60 (Flat washer 11)

40.31 (Flat Washer 40x18x4)



01.110
40.04 (M16x45 8.8)
40.30 Flat Washer 18
40.31



40.03 (M16x45 8.8)
40.30 (Flat Washer 18)

40.03 (M16x45 8.8)
40.30 (Flat Washer 18)

10.00
40.04 (M16x45 8.8)
40.30 (Flat Washer 18)

10.00
40.04 (M16x45 8.8)
40.30 (Flat Washer 18)

03.108

05.106

NAME	AG01H3 System conection detail
Drawing Nr. Zehg. Nr.	Nr 5
Item Nr. Stück Nr.	-
Data Datum	07.05.2012

ALKA

